

National Vehicle Distribution

Managing Driving For Work Risk Pays Dividends



Who We Are

We are an Irish family owned Automotive Logistics Company. ISO certified and operating from state-of-the-art facilities, we provide integrated solutions for our valued customers.

Transport

- **140 Car Transporter Trucks** operating throughout Ireland, UK and Mainland Europe
- Average Age 5.5 years
- 11% Replacement Policy

Compound Storage

75 Hectares of Secure Storage with a presence at all three major Irish Ports – Dublin, Cork and Rosslare

Vehicle Preparation Centres

Centralised PDI, Fleet and De-fleet Services, Hire Drive and Fleet Preparation, Fitment and Conversions

Driving For Work Risk Factors

- Driver Behaviour / Unsafe Driving
- Unsafe Truck / Poor Maintenance
- Load Securing / Unsecured or Poorly Secured Load
- Height and Weight of Car Transporter (Different Legislation in Different Jurisdictions)
- Slips, Trips and Falls when Working on or Around a Car Transporter Truck

NVD Fast Facts

Certified for ISO 9001, ISO 14001 and OHAS 18001

Units Handled: 125,000 vehicles per annum

Distribution Centres' Capacity: 35,500 vehicles



Our Challenge

- Reduce Transport (Employee) Accidents
- Reduce driver turnover (Unsustainable at >50%)
- Reduce the incidence (and cost) of cargo damage events
- Ensure 100% compliance with weight and height (Transporter Dimensioning) across different jurisdictions, varying loads and different types of trucks
- Eliminate the risk of a serious fall from a car transporter and reduce the level of slips, trips and falls
- Ensure compliance with safety standards for all grey fleet drivers

Key Risks

Risk Minimisation Investment

Unsafe Driving / RTA

New Extensive Classroom & Field Training Programme Implemented from 2014 for all Drivers, substantially improved and refined through 2015 and 2016
Dedicated Telematics deployed with pro-active score maximisation

Unsafe Truck

Substantial investment in improved maintenance facilities and practices; dedicated in-house workshop established in 2015 & 2016

Transporter Dimensioning

Planning system measures load dimensions to ensure compliance

Secure Loading

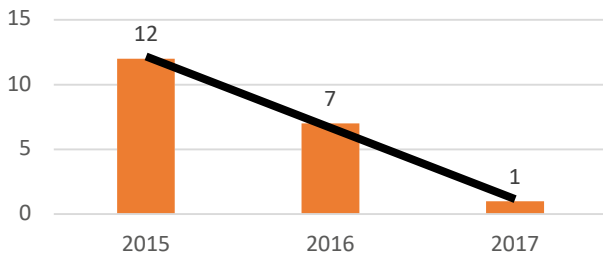
Investment in Training Videos and in developing standards following our own testing of equipment. Programme launched to ensure compliance with Irish and European legislation and standards

Slips, Trips and Falls from or on a Transporter

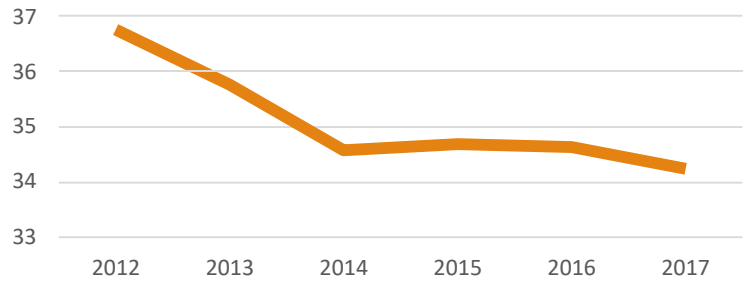
Loading and mechanical SOPs rolled out during 2017

THE RESULTS

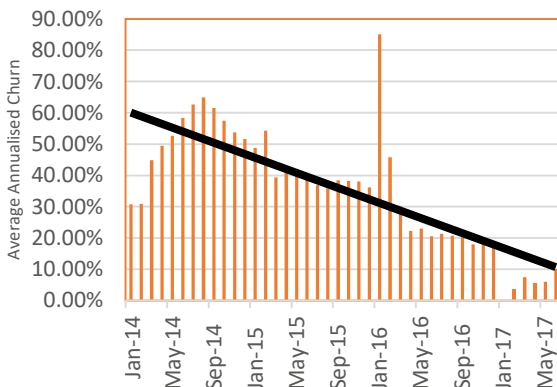
Transport (Employee) Accidents 2015 - 2017 YTD



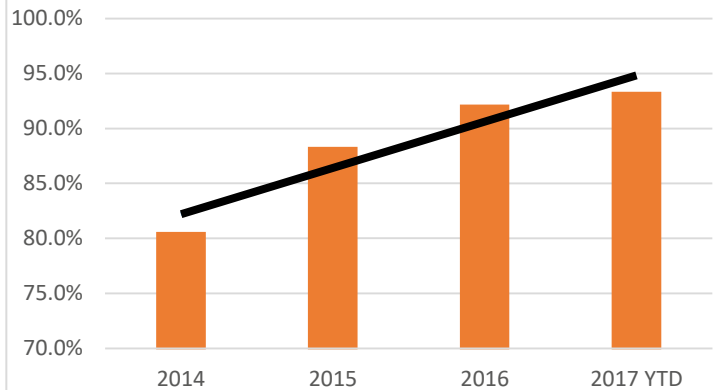
Fuel litres per 100Km driven



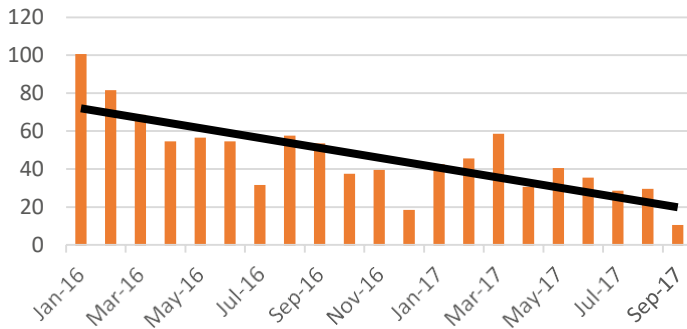
Driver Churn Jan 14 – June 17



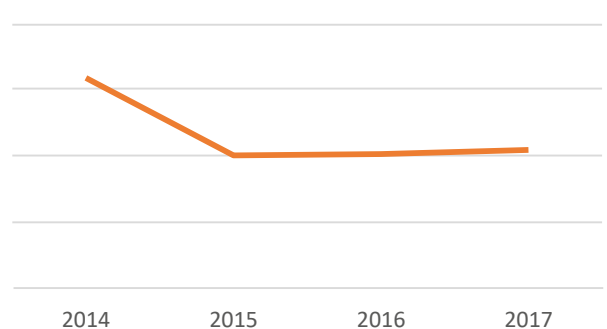
Average Driver Score 2014 - 2017 YTD



Roadside Breakdowns Jan 16 - Sept 17



Damage Cost



Conclusions

- Managing driving for work risk requires each sub-component risk to be assessed and actively minimised
- The solutions include training, systems, technology and process investment
- Efficiency is clearly correlated with safety
- A safe working environment has a significant impact on employee retention

Next Steps

- Further expansion of driver behaviour audits
- More extensive use of camera technology is under active consideration
- Increasing refresher training and use of training videos