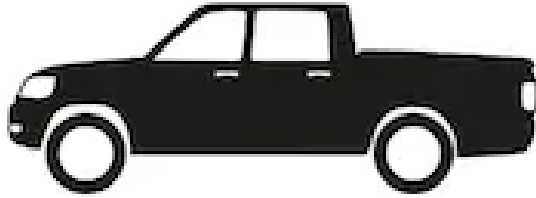


Essentials of Truck Fleet Safety



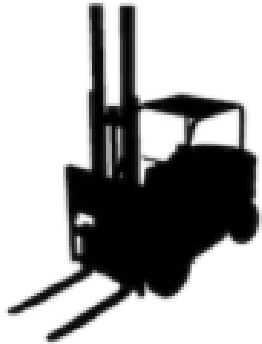
Deirdre Sinnott McFeat
Health and Safety Authority

Profile of vehicle deaths at work 2010 to 2019



**Vehicles are involved in
44%**

Of all reported deaths at work



Profile of vehicle deaths at work 2010 to 2019

82% of deaths in four economic sectors



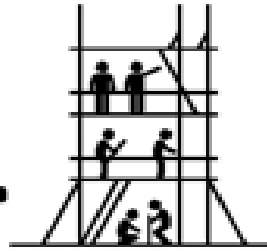
110 (51%)

Agriculture



25 (12%)

Transportation and
Storage



24 (11%)

Construction



20 (9%)

Wholesale and
Retail Trade



16%

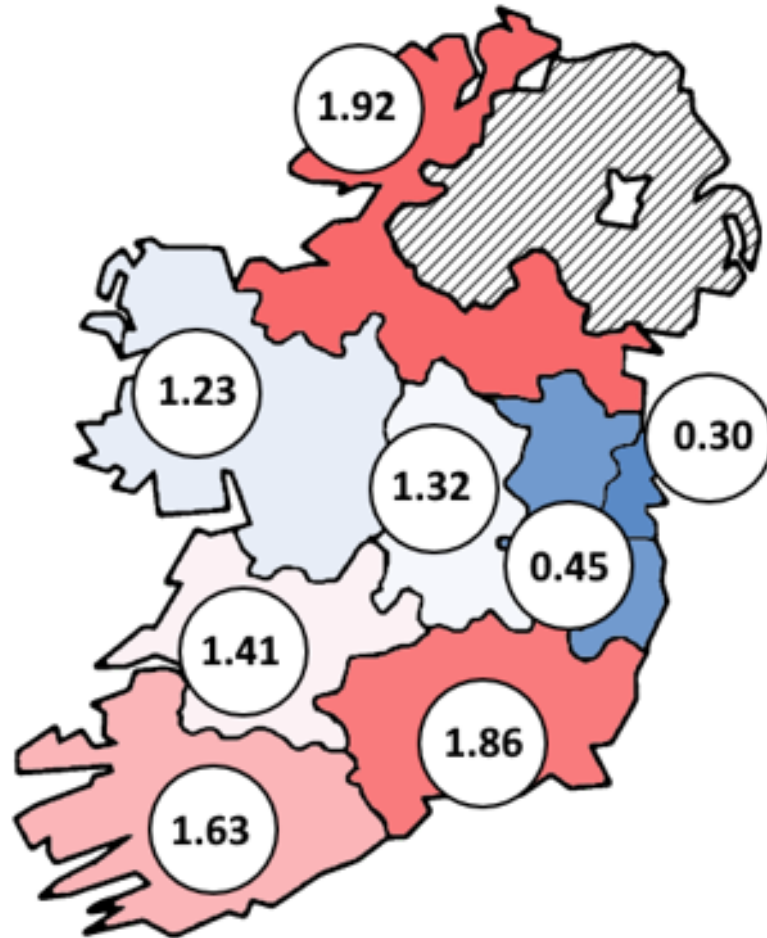


6%



9%

Profile of vehicle deaths at work 2010 to 2019



	Rate per 100,000 employed
Border	1.92
South-East	1.86
South-West	1.63
Mid-west	1.41
Midlands	1.32
West	1.23
Mid-East	0.45
Dublin	0.30



**62% of vehicle deaths
occurred in small
businesses**



**16% of victims
were non workers**

Truck involvement in vehicle deaths



Vehicle Deaths in Transport Sector 2010 - 2019



60%
involved
trucks



48%
of victims were
truck drivers



40%
occurred in
storage or
loading areas



36%
of victims were
struck by vehicles



28% involved
vehicle crashes

25 Deaths reported to HSA

Vehicle Deaths in Wholesale & Retail and Repair of Motor vehicles

2010 - 2019



45%
occurred in
maintenance
workshops



20%
involved
trucks/lorries



20%
of victims were
struck by vehicles



50%
of victims
mechanics



35%
of victims were
crushed by unstable
vehicles under
maintenance



20%
occurred in
storage or
loading areas

Most common types of Incidents causing death

- Truck **reversed over** victim
- Truck moving forward **struck pedestrian** victim
- Driver/unloader **falls from truck** body/trailer
- Truck **reversed trapping victim** against structure
- **Loads striking driver/worker/member of public** during loading/unloading operations
- Truck **collisions on public road**
 - Single and multiple vehicle collisions
 - Truck struck cyclist
 - Truck overturns
 - Truck runs off road



Essential areas that need to be managed and controlled

Vehicle movements	Vehicle operations	On road operations
<ul style="list-style-type: none">• Vehicle condition• Vehicle roadworthiness• Driving forward• Reversing• Slow speed manouvres• Vehicles entering workplace• Vehicles exiting workplace• Vehicle parking• Trailer parking• Forklift movements	<ul style="list-style-type: none">• Deliveries and collections• Working at height on vehicles• Loading, unloading and securing of loads• Coupling/Uncoupling of trailers• Vehicle maintenance and repair• Tipping of loads• Tail lift operations• Lorry loader crane operations• Manual handling of goods, materials and parts	<ul style="list-style-type: none">• Driving for work [weather]• Reversing & manoeuvres• Roadside deliveries [day and <u>night</u>]• Working on or near the road• Breakdowns/ repairs• Emergencies• Negotiating roadworks/ roadchecks• Vehicle parking• Vulnerable Road Users (VRU) interactions

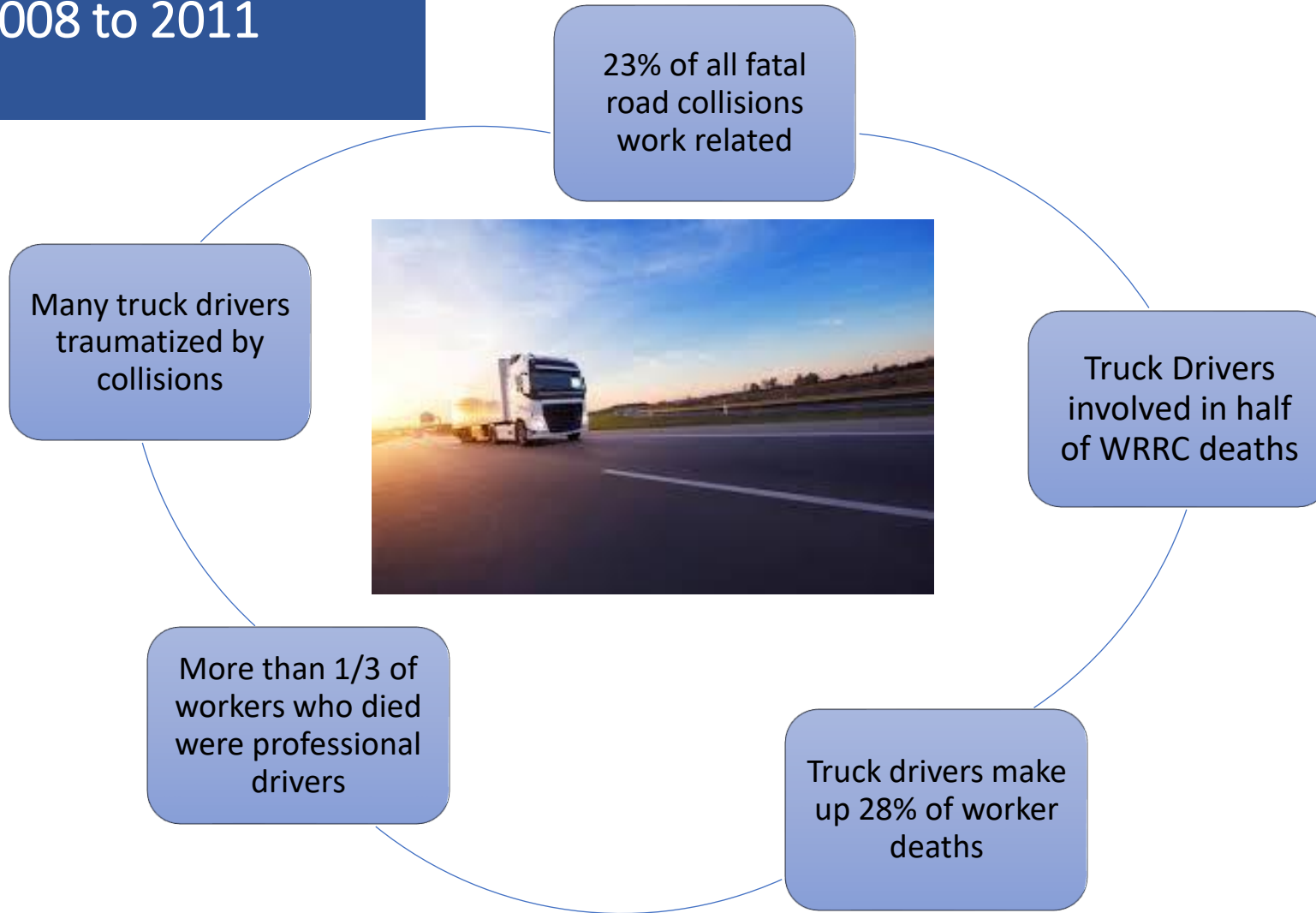
Why truck incidents happen?

- Lack of management control
- Lack of safe systems of work for vehicle operations
- Unsafe/unroadworthy vehicles
- Lack of awareness
- Lack of training
- Errors and omissions
- Deliberate unsafe acts
- Killer behaviours
- Unsuitable roads infrastructure



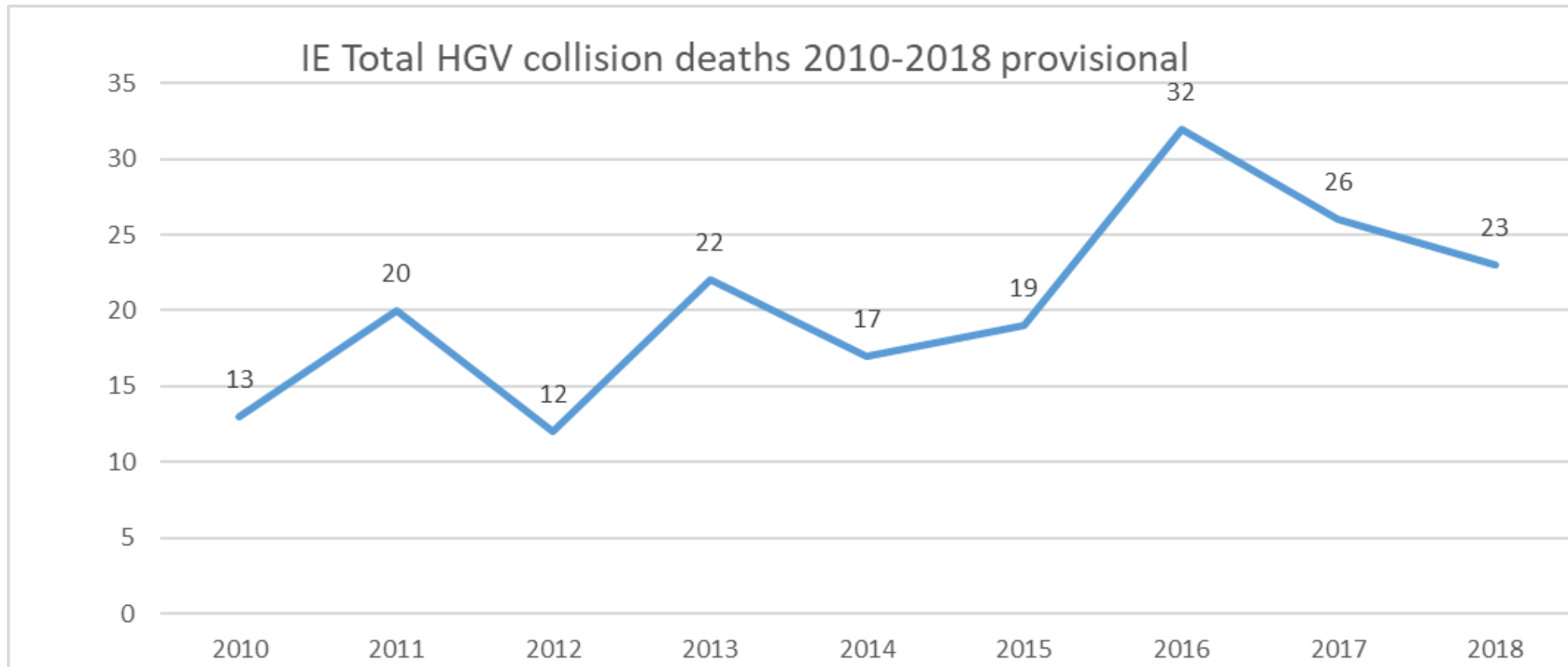
Fatal Work Related Road Collisions Research 2008 to 2011

<https://iosh.com/media/1499/iosh-fatal-collisions-on-the-road-full-report-2016.pdf>.



Scale of HGV Road Collision Deaths

<https://etsc.eu/how-to-improve-the-safety-of-goods-vehicles-in-the-eu-pin-flash-39/>

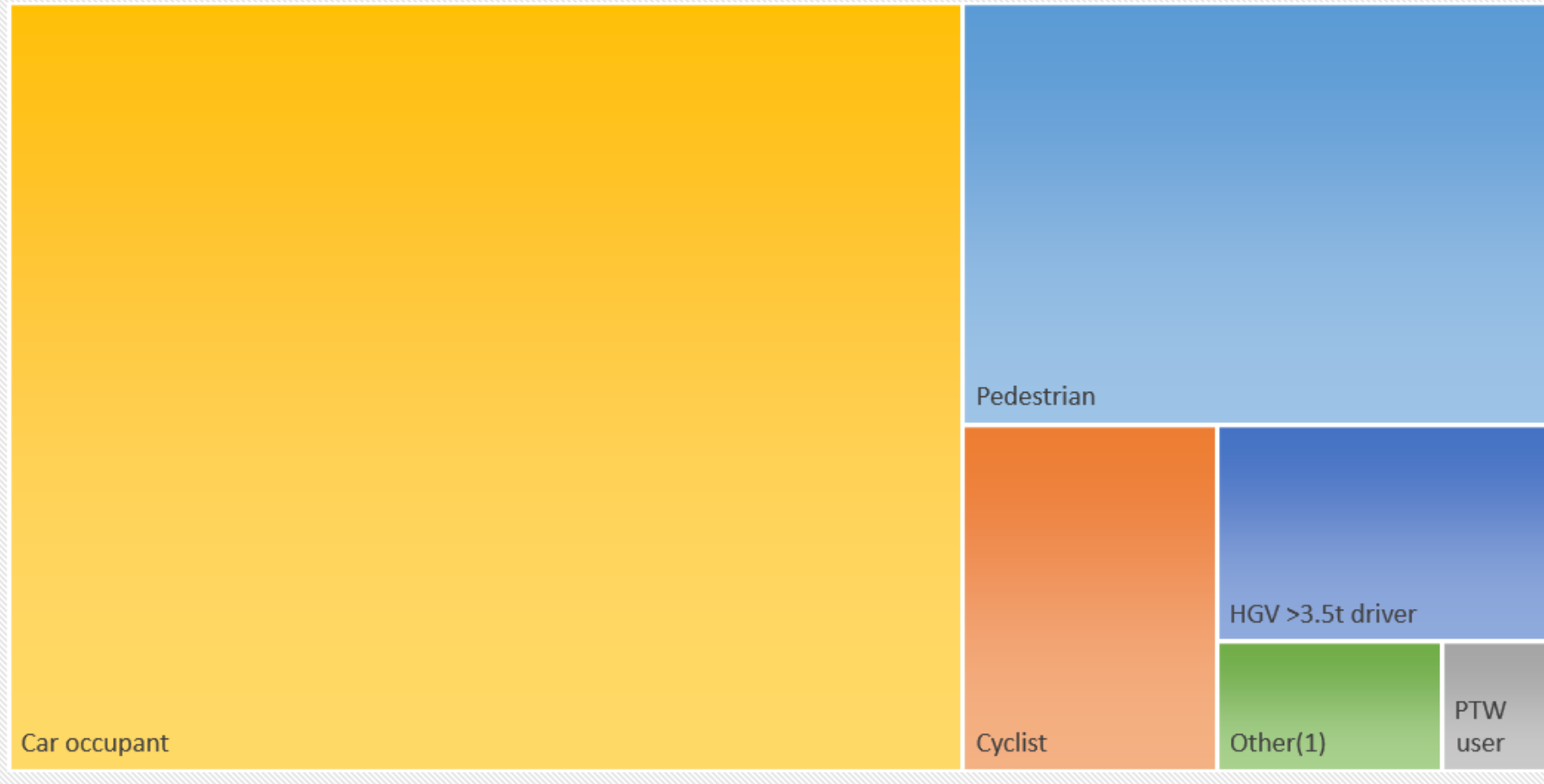


HGV Road Collision Deaths

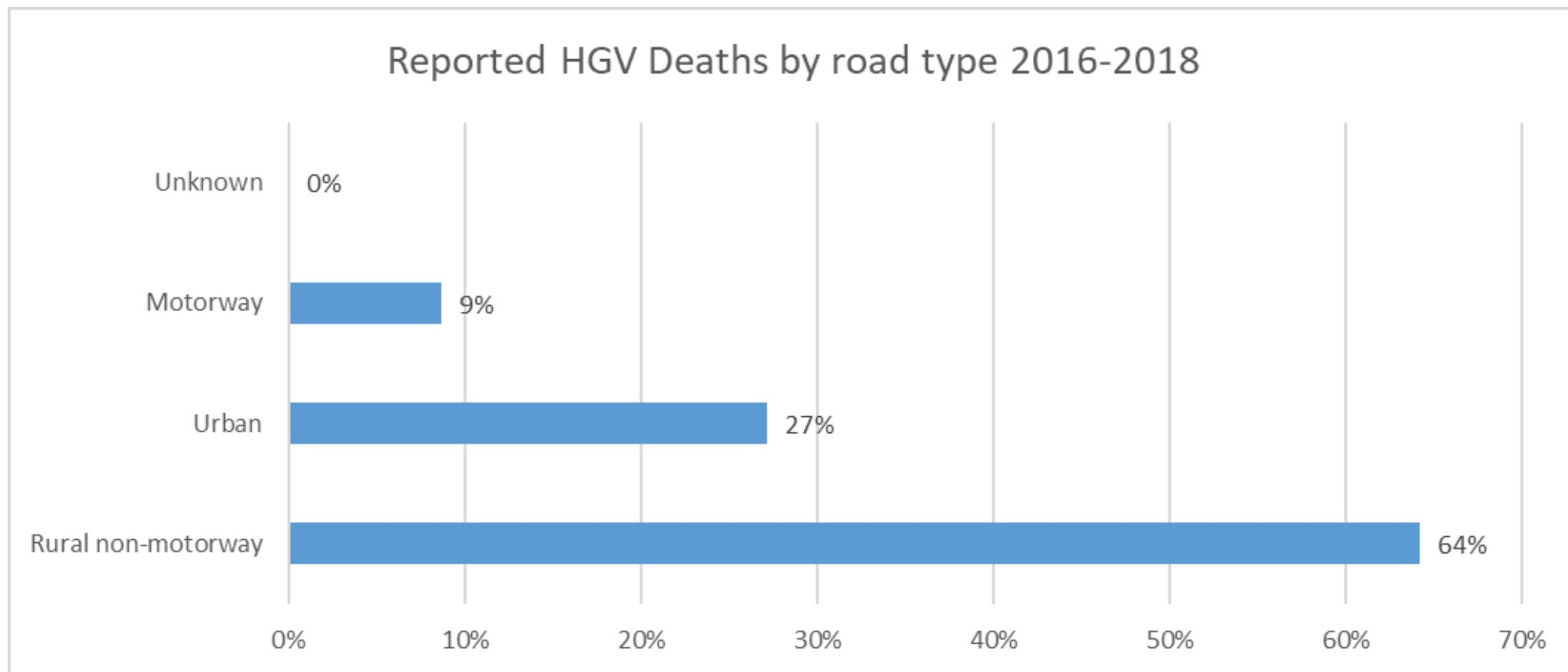
Victim profile

www.etsc.eu/<https://etsc.eu/how-to-improve-the-safety-of-goods-vehicles-in-the-eu-pin-flash-39/>

HGV Fatal collisions 2016-2018: Proportion of deaths by road user group



HGV Deaths by Road Type



Safety Statement

[Risk Management Framework]

Risk Assessment

Of all HGV activities
In the workplace and on the road

Risk Management

Controls
Procedures
Rules

Driver
management

[Killer Behaviours]

Vehicle
Management

Journey
management

Truck operations
management

Redouble efforts to manage truck fleet risk in your business

- **Prioritise** truck fleet risk management now
- **Appoint** someone to take ownership
- **Carry out**
 - Truck fleet **risk inventory**
 - Truck fleet risks **gap analysis**
 - **Truck operations risk assessment**
- Put in place **Truck fleet management policy**
- Put in place effective **truck fleet management procedures**
- **Monitor and review** to ensure safe and sustainable truck operations and compliance

