

# Vehicle Maintenance

## The Compliance Picture

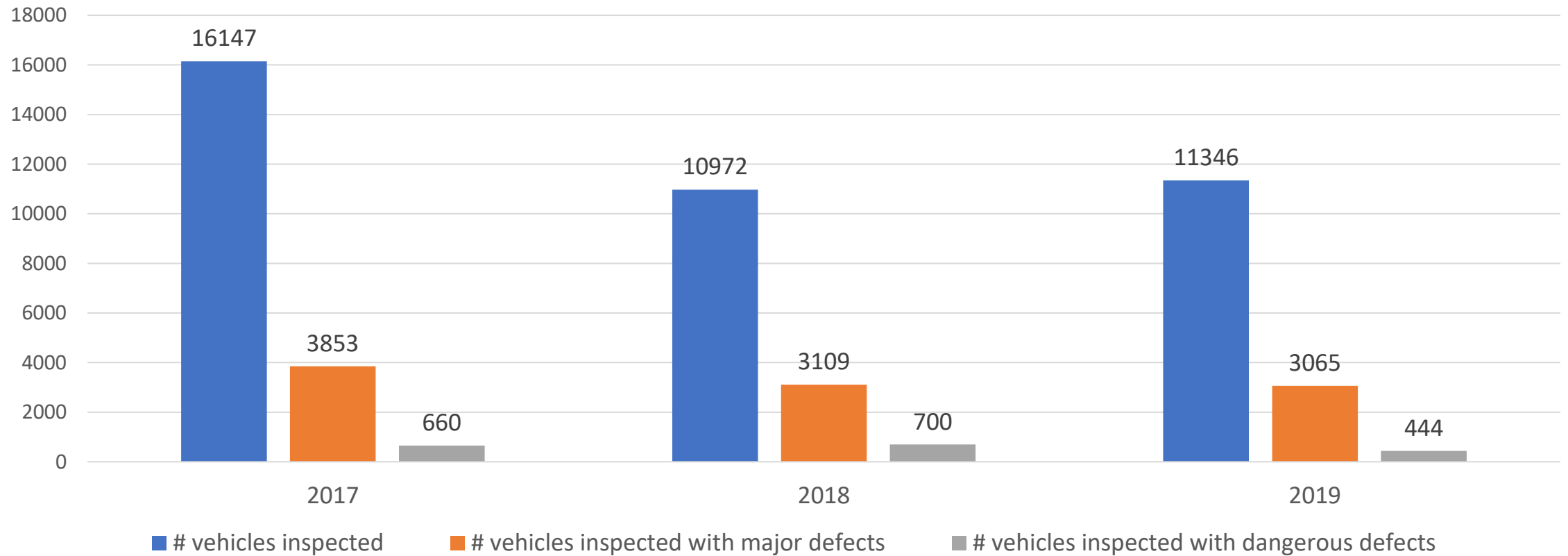


Justin Martin  
RSA Head of Enforcement

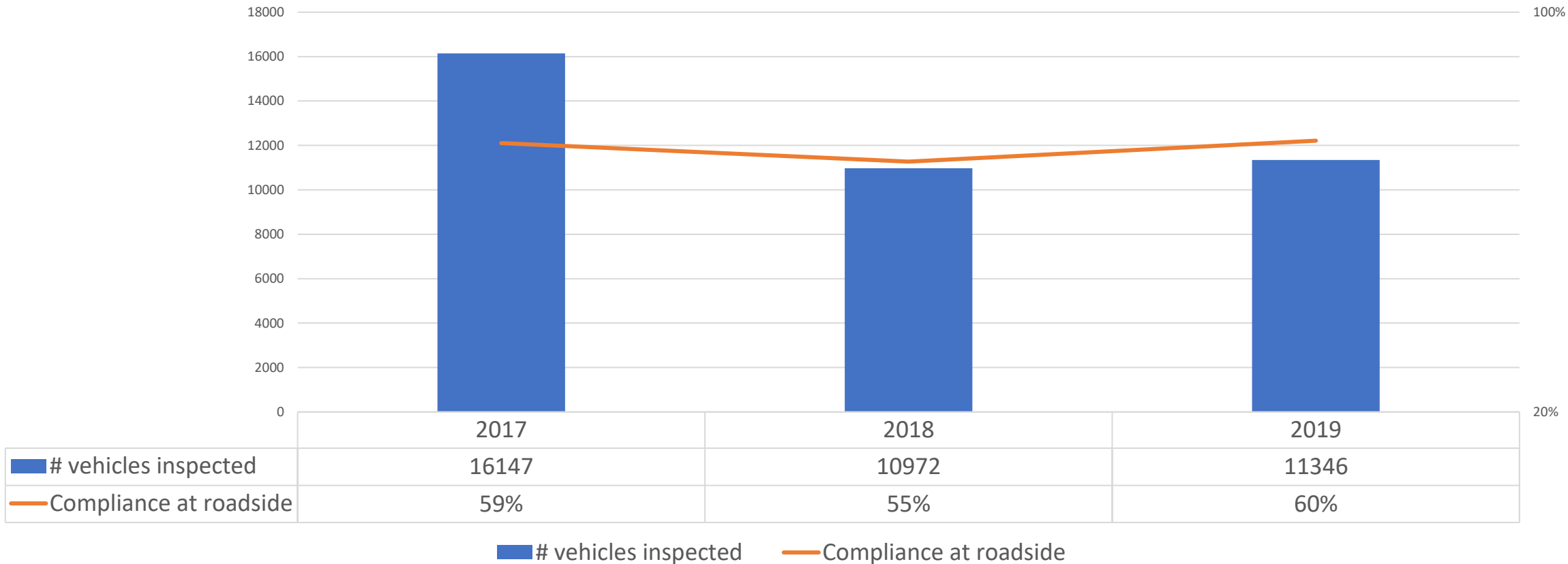
- Vehicle owners/operators must
  - Ensure vehicles are roadworthy – FIX BEFORE USE
  - Ensure vehicles are tested on time
  - Implement a system for regular inspection and maintenance of vehicles
  - Periodically review it
  - Make any changes required to ensure it is effective
  - Ensure inspection frequency takes account of vehicle condition, age and mileage, manufacturers guidelines etc
  - Ensure inspections are carried out by suitably qualified persons
  - Ensure drivers are trained to carry out vehicle walkaround checks, record & notify defects
  - Ensure defects get repaired
  - Keep records
  - Make an annual declaration to the RSA



# Roadworthiness roadside inspection stats 2017 - 2019

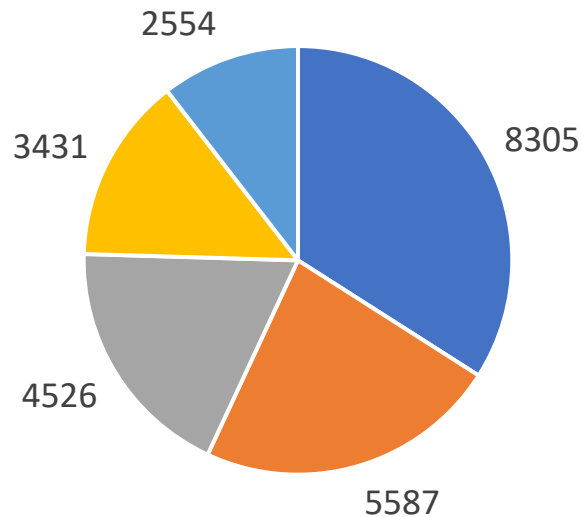


# Roadworthiness roadside compliance stats 2017 - 2019



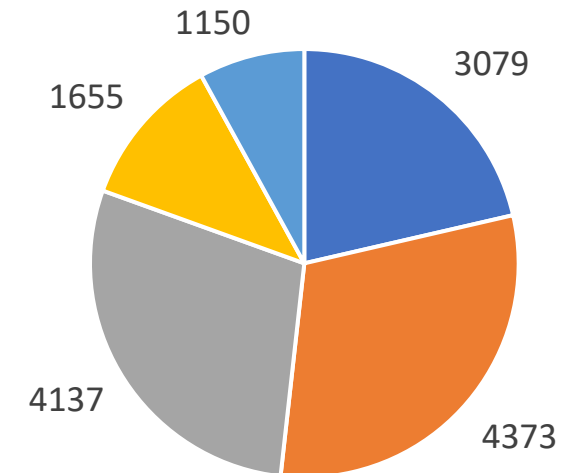
# Top 5 defect categories detected at roadside inspections in the years 2017 - 2019

All defect severities



- Lamps, reflectors, electrical equipment
- Axles, wheels, tyres & suspension
- Braking equipment
- Chassis & Chassis attachments
- Visibility

Major/dangerous defects



- Lamps, reflectors, electrical equipment
- Axles, wheels, tyres & suspension
- Braking equipment
- Chassis & Chassis attachments
- Visibility

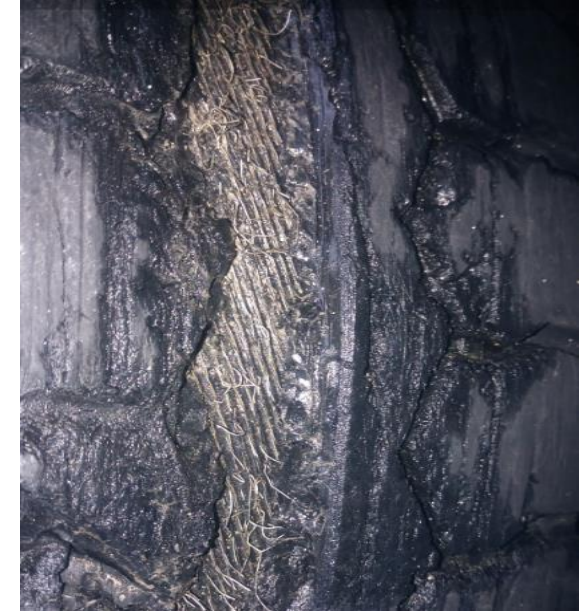


## Common Defects – Lamps, reflectors & electrical equipment





# Common Defects – Axles, wheels, tyres & suspension





# Common Defects – Braking equipment





## Common Defects – Chassis & chassis attachments



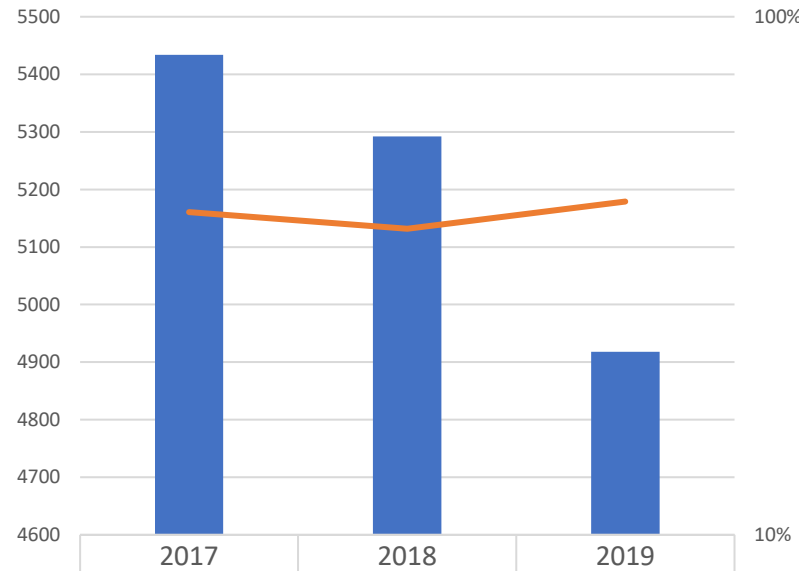


Common Defects – Visibility



# Roadworthiness premises compliance stats 2017 - 2019

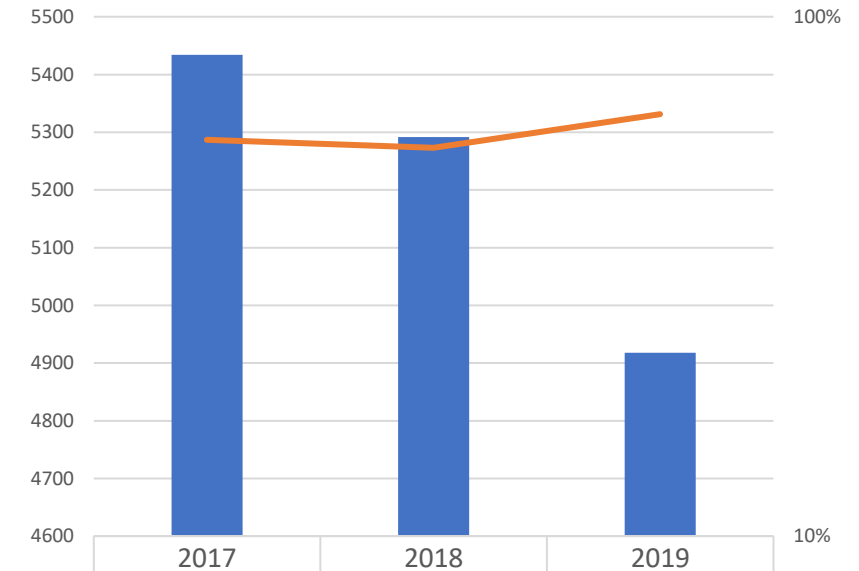
Compliance rate first visit



# premises inspections	5434	5292	4918
Compliance rate first visit	42%	39%	44%

# premises inspections      Compliance rate first visit

Compliance rate second visit

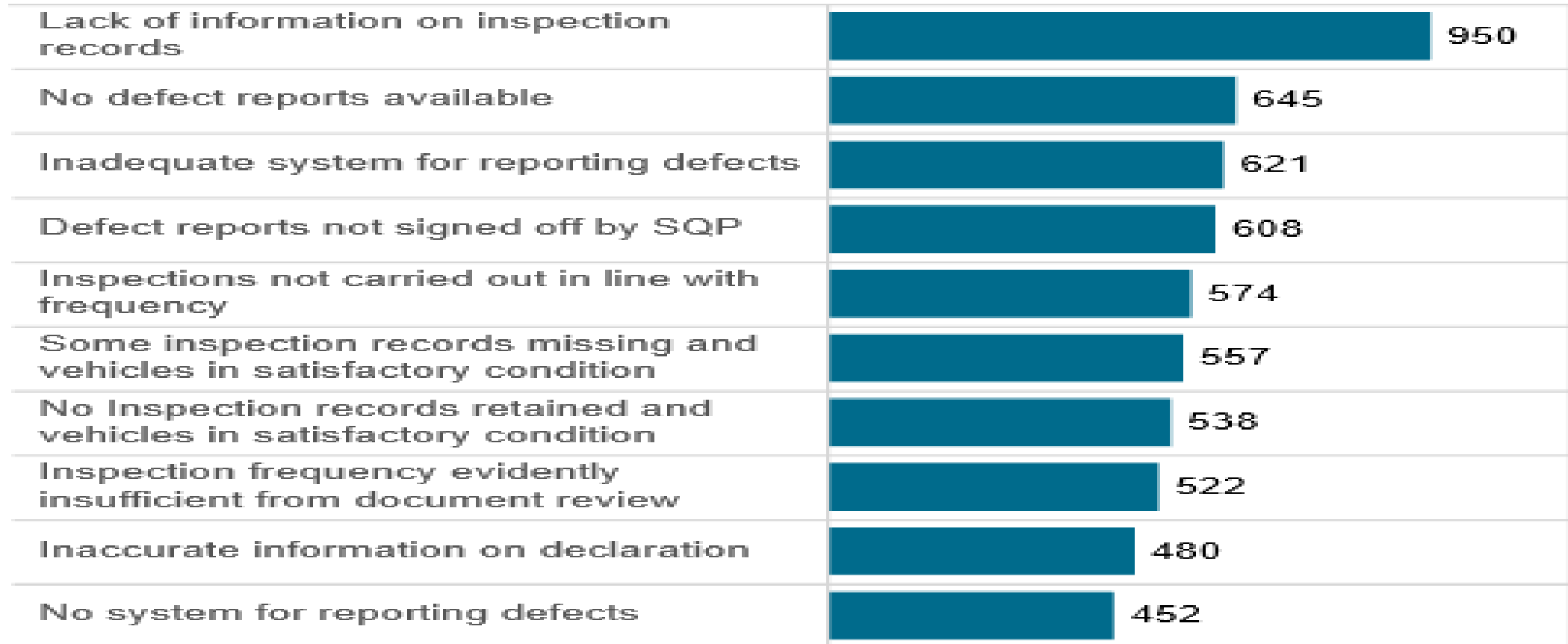


# premises inspections	5434	5292	4918
Compliance rate second visit	58%	56%	65%

# premises inspections      Compliance rate second visit



# Top 10 infringements detected at premises inspections in 2019



## Consequences for Non Compliance

- Collisions
- Negative impact on risk rating (CVORI)
- Vehicles ordered to be repaired on site – delays
- Vehicle taken off road / to CVRT centre for further investigation
- Arrest for dangerous driving by An Garda Síochána
- FCPN / Prosecution



### Fines and Penalty Points

Failing to comply with Vehicle Maintenance & Repair Regulations	Court appearance attracting a €5,000 fine and/or imprisonment for a term not exceeding six months on conviction
Driving vehicle before remedying dangerous defect	Mandatory court appearance attracting 3 penalty points & fine not exceeding €5,000 on conviction
Driving dangerously defective vehicle	Mandatory court appearance attracting 5 penalty points & fine not exceeding €5,000 on conviction
Using Commercial Vehicle without Certificate of Roadworthiness (CRW)	Mandatory court appearance attracting 5 penalty points & fine not exceeding €5,000 on conviction



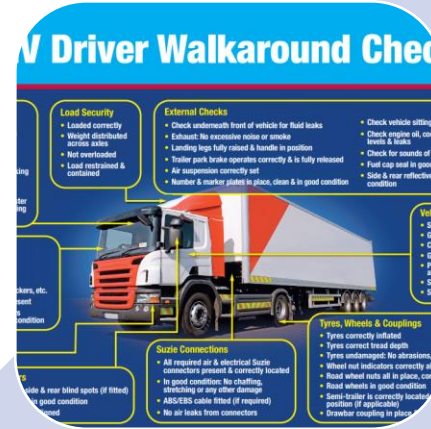


**1. Maintain your vehicle  
FIX BEFORE USE**

**2. Test on time**

**3. Display your disc**

**4. Review systems**



## Further Information

- Web:

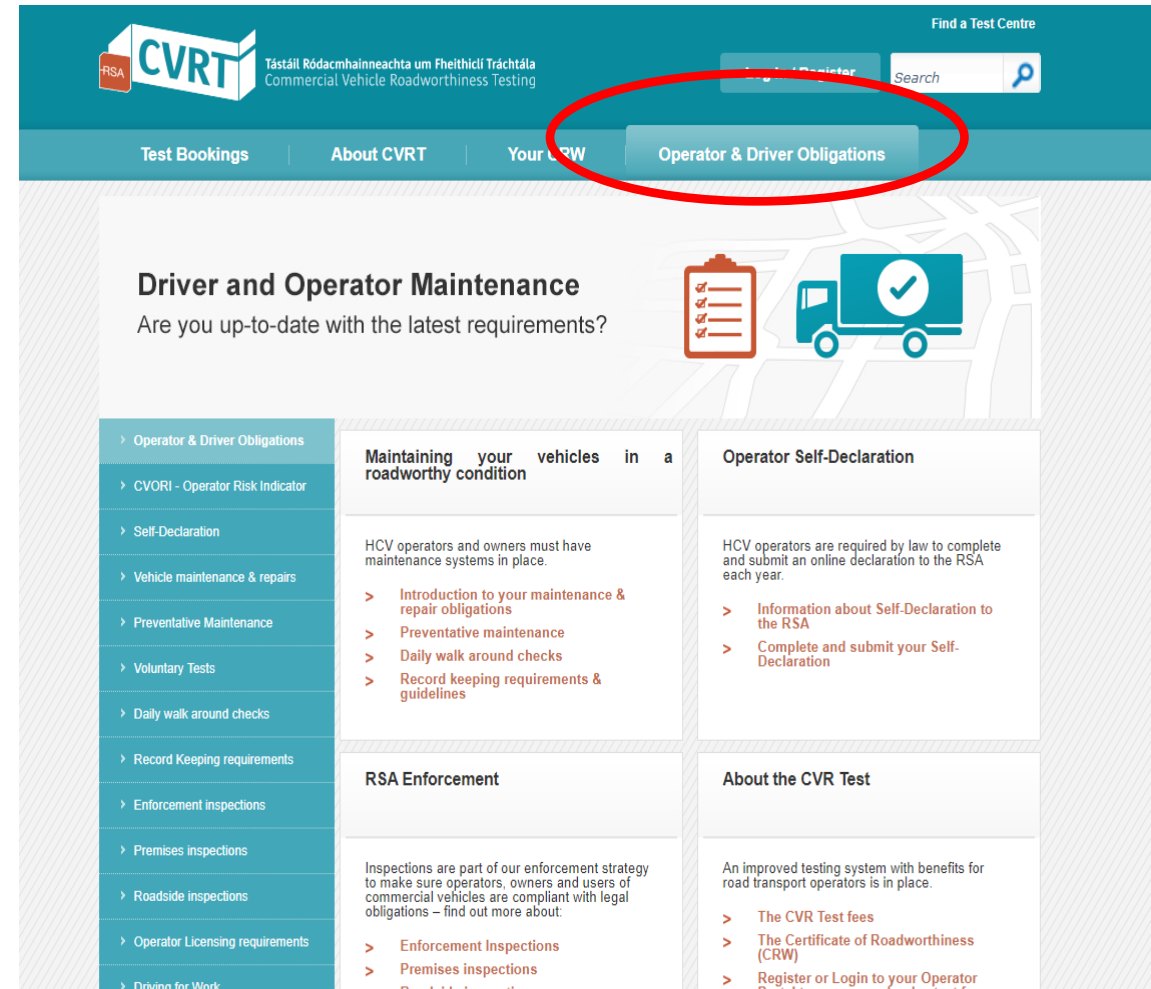
- [www.rsa.ie](http://www.rsa.ie)
- [www.cvrt.ie](http://www.cvrt.ie)

- Email:

- [cvrtadmin@rsa.ie](mailto:cvrtadmin@rsa.ie)
- [Enforcement@rsa.ie](mailto:Enforcement@rsa.ie)

- Phone:

- 091 872600
- 1890 253 163 (Confidential line)





[makeameme.org](http://makeameme.org)